

# TECHNICAL BULLETIN



**Product:** Bad Boy® Spot Luminaire  
**Manufacturer:** PRG  
**Subject:** Baseplate Retrofit  
**Bulletin No:** BAD-014  
**Date:** 01-09-2012

## INTRODUCTION

### Bad Boy Luminaire Baseplate Retrofit

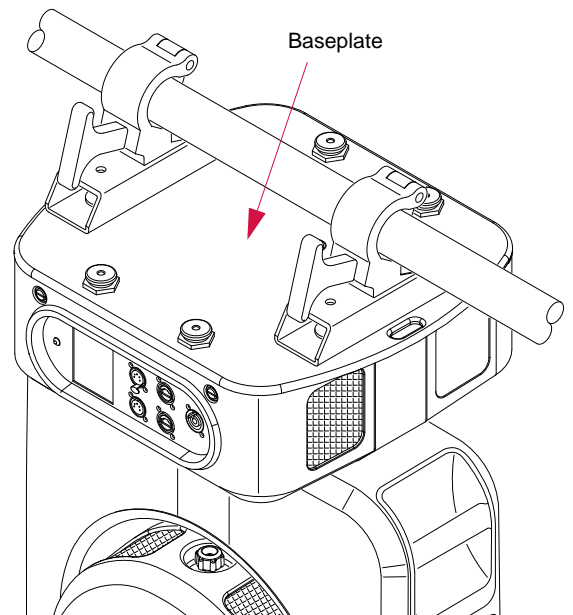
It has been determined that some Bad Boy baseplates have the possibility for weakness at the two slots where the safety cables are attached. In extreme cases the outer edge of the slot can break off, leaving nowhere to attach the safety cable. In order to prevent this problem, all Bad Boy baseplates should be replaced.

This technical bulletin provides a procedure for replacing the baseplate. This procedure applies to the following locations:

- + Australia, Germany, Japan, UK

When complete, the TEAM inspection should be completed by UK locations. For all other locations, email the fixture serial numbers to [badboyservice@prg.com](mailto:badboyservice@prg.com)

PRG Dallas will perform this retrofit for all North American locations. Please coordinate this with your Asset Management.



### Parts, Tools, and Supplies

#### 28.9812.1401 KIT, BASEPLATE RETROFIT

04.9812.0040	1 EA	LABEL, COMPLIANCE, BAD BOY
21.9812.0802	1 EA	ASSY, BASEPLATE RETROFIT
53.6634.0004.1	4 EA	SCREW, 3/8-16 x 1-1/4 FLAT
53.2203.0001	4 EA	NUT, 3/8-16 NYLON INSERT

#### 28.9812.1500 KIT, BAD BOY BASEPLATE RETROFIT TOOL

06.6019.0002	LOCTITE, 242 THREADLOCKER ADHESIVE, 1.69 oz. BLUE
07.3038.0002	SCREWDRIVER, PHILIPS ROUND BLADE, #2 TIP, 1" BLADE , ULTRA-GRIP
07.3038.0003	SCREWDRIVER, PHILIPS ROUND BLADE, #2 TIP, 8" BLADE , ULTRA-GRIP
07.5024.0002	WRENCH, 3/8" SQUARE DRIVE W/ SOCKET RELEASE, 5-75 FT-LBS ADJUSTABLE CLICK-STYLE
07.3022.0006	SOCKET, 3/8" SQUARE DRIVE 6-POINT STD, 9/16" SIZE, 1-1/8" LENGTH
07.3025.0002	PLIERS, 8-1/4" LONG-NOSE EXTRA REACH, 1-9-16" JAW LENGTH, 5/32" TIP
07.3025.0003	PLIERS, WIRE-CUTTING W/SPRING RETURN, OVAL, 6-3/8" LENGTH, 7/8" JAW
07.3019.0004	HEX KEY, 7/32" MOLDED SMOOTH-GRIP T-HANDLE, 4" BLADE
07.5024.0003	WRENCH, 9/16" SIZE 8-5/8" LENGTH, RATCHETING COMBO

## PROCEDURES

---

### Replacing the Baseplate



**WARNING:** Remove power from luminaire before performing any maintenance procedures.

---

#### To replace the baseplate:

- Step 1. Remove power from luminaire and allow components to cool for at least 5 minutes.
- Step 2. Remove Enclosure Covers as follows:
- At each Enclosure Cover, loosen two captive screws (**Figure 1**).
  - Remove cover by pulling straight out until lip clears yoke support.



**CAUTION:** The Enclosure Covers are not identical. One is for the Intake side and one for the Exhaust side. Be sure to re-install covers in the proper location.

---

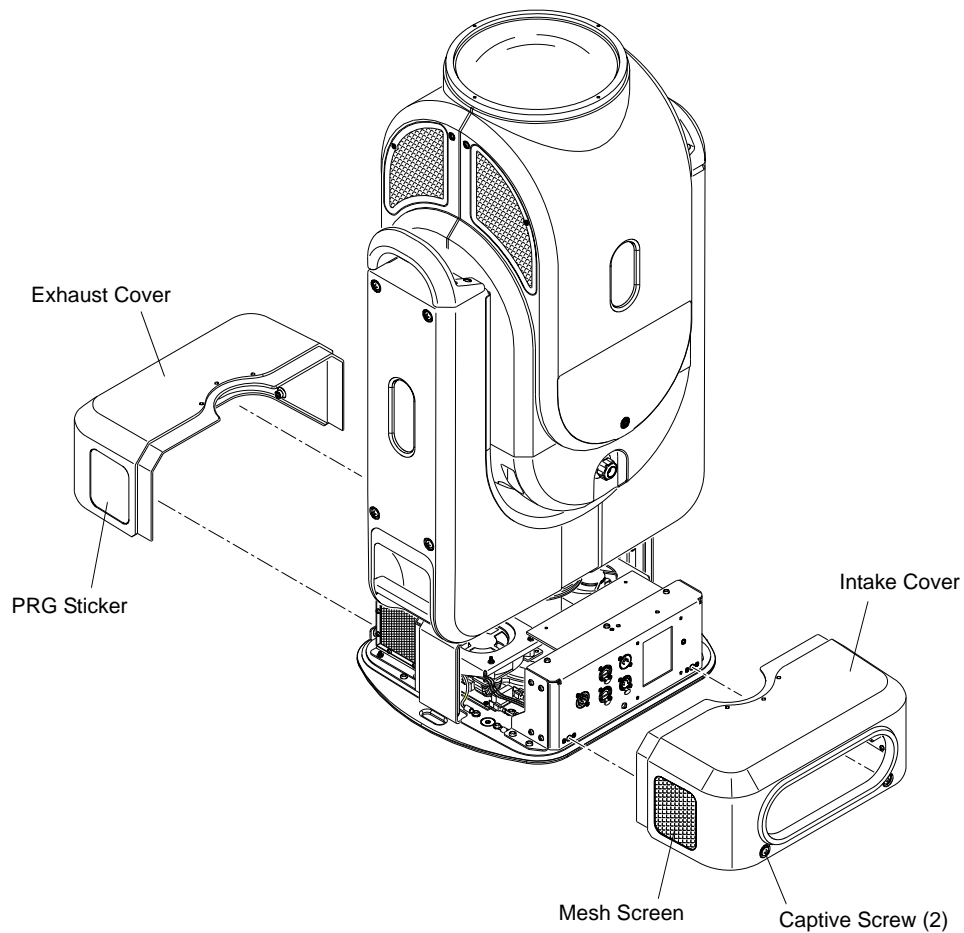
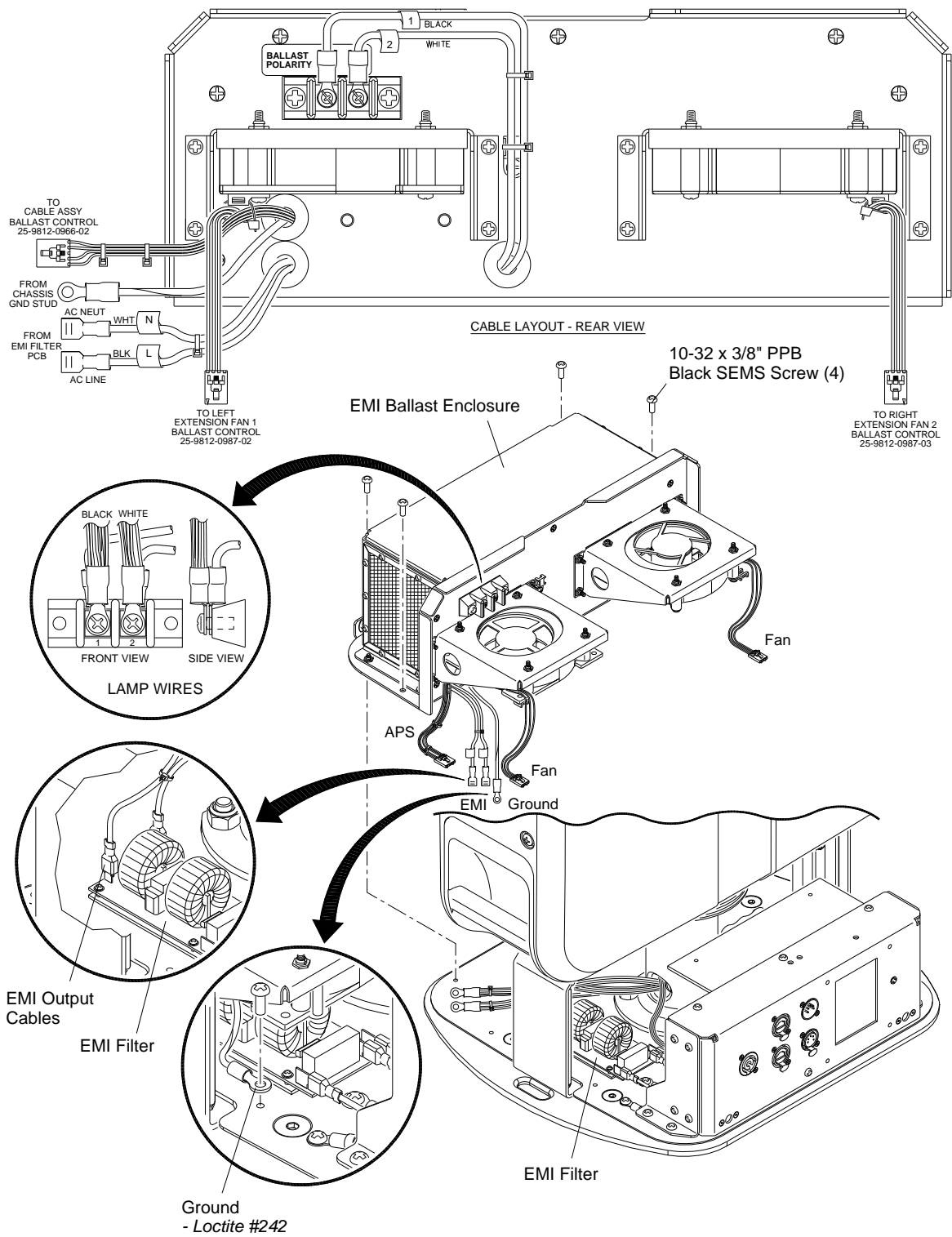


Figure 1: Removing Upper Enclosure Covers

- Step 3. Remove EMI Ballast Enclosure as follows:
- a. Disconnect the following wiring (**Figure 2**):
    - 1) APS Cable.
    - 2) Two Fan Cables.
    - 3) Ground Cable.
    - 4) Lamp Power Ballast Output Cables (white and black).
  - b. At EMI Ballast Enclosure, remove four 10-32 x 3/8" PPB Black SEMS screws. (Assembly will still be connected by wiring.)
  - c. Move EMI Ballast Enclosure away from the luminaire as far as the cabling will allow. (This will provide access to disconnect the remaining cables.)
  - d. At EMI Filter, disconnect two output cables.
  - e. Cut tie-wrap to free Lamp Power Ballast Output Cables.
  - f. Remove EMI Ballast.

- Step 4. Remove Interface/LVS Module as follows:
- a. At Interface/LVS Module, remove four 10-32 x 3/8" PPB SEMS screws (**Figure 3**).
  - b. At left side of Interface/LVS Module, disconnect the following wiring:
    - 1) Fan cable.
    - 2) APS Control Line cable.
    - 3) Neutral (white) cable.
    - 4) Line (black) cable.
    - 5) Ground cable.
  - c. At right side of Interface/LVS Module, disconnect the following wiring:
    - 1) Fan cable.
    - 2) CAN Bus cable.
    - 3) Power cables (red and black).
  - d. Remove Interface/LVS Module.



**Note:** Be careful to maintain correct polarity of the lamp wires during re-assembly.

Figure 2: Removing EMI Ballast Enclosure

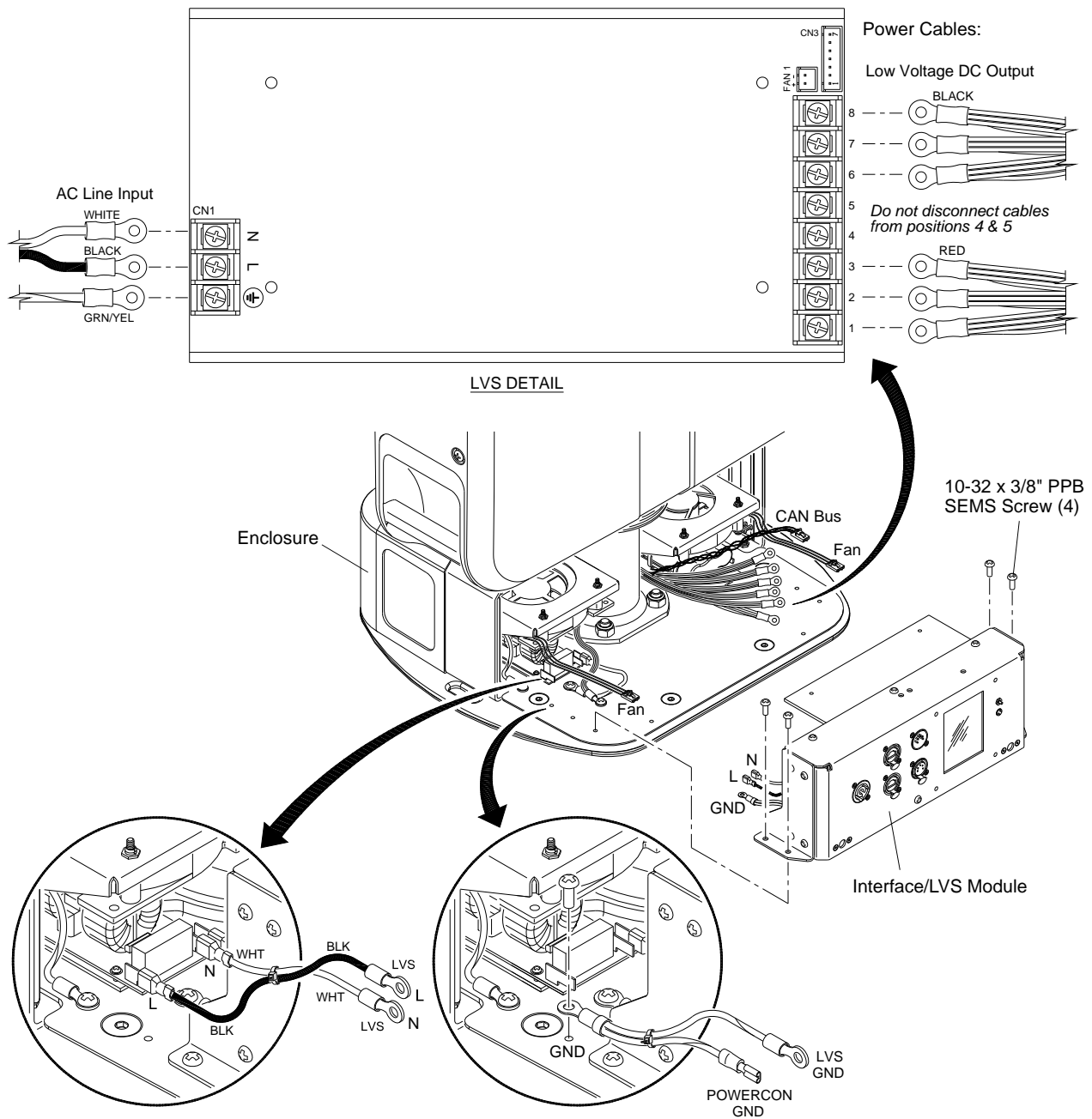


Figure 3: Removing Interface/LVS Module

Step 5. Remove and save Compliance Label (with serial number and barcode) as shown in **Figure 4**.

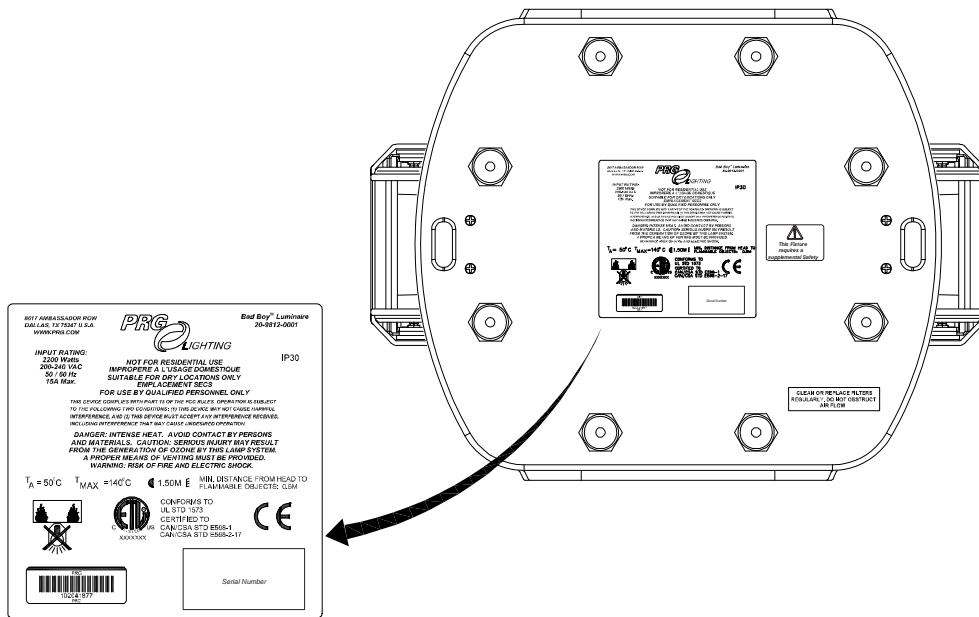


Figure 4: Removing Compliance Label from Baseplate

Step 6. Remove Baseplate from luminaire as follows:

- At bottom of Baseplate, remove four 8-32 x 3/4" PF screws which secure Coverstrap (**Figure 5**).
- Remove four 3/8-16 x 1-1/4" socket screws and nuts securing Baseplate to Pan Tube. *Discard hardware.*
- Remove Baseplate.

**Note:** Luminaire Head not shown for clarity.

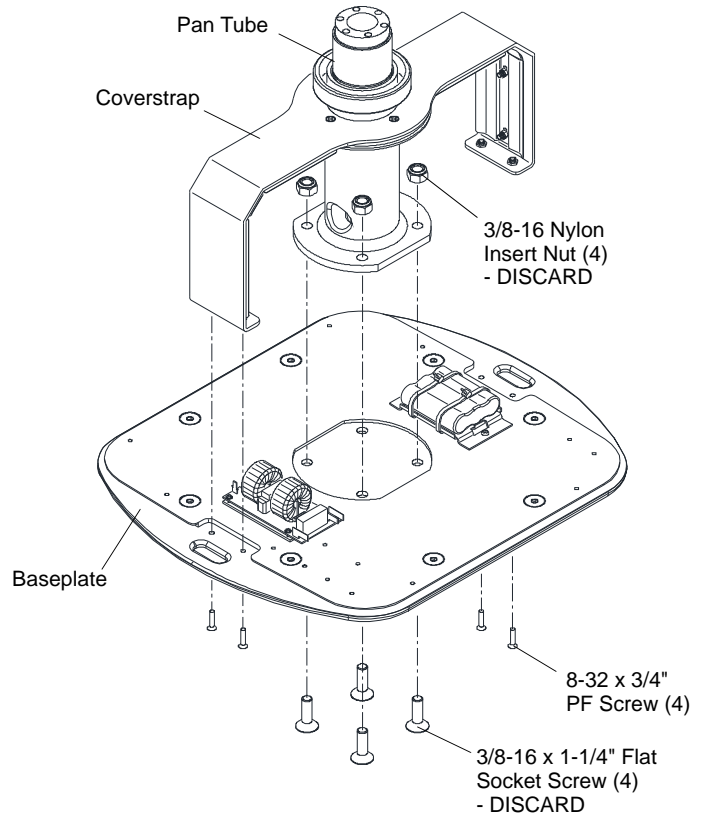


Figure 5: Removing Baseplate

- Step 7. Remove remaining Baseplate components as follows:
- Remove entire Battery Assembly by removing two 6-32 x 1/4" PPZ screws.
  - Remove EMI Filter by removing two 6-32 x 1/4" PPZ screws.
  - Discard Baseplate.

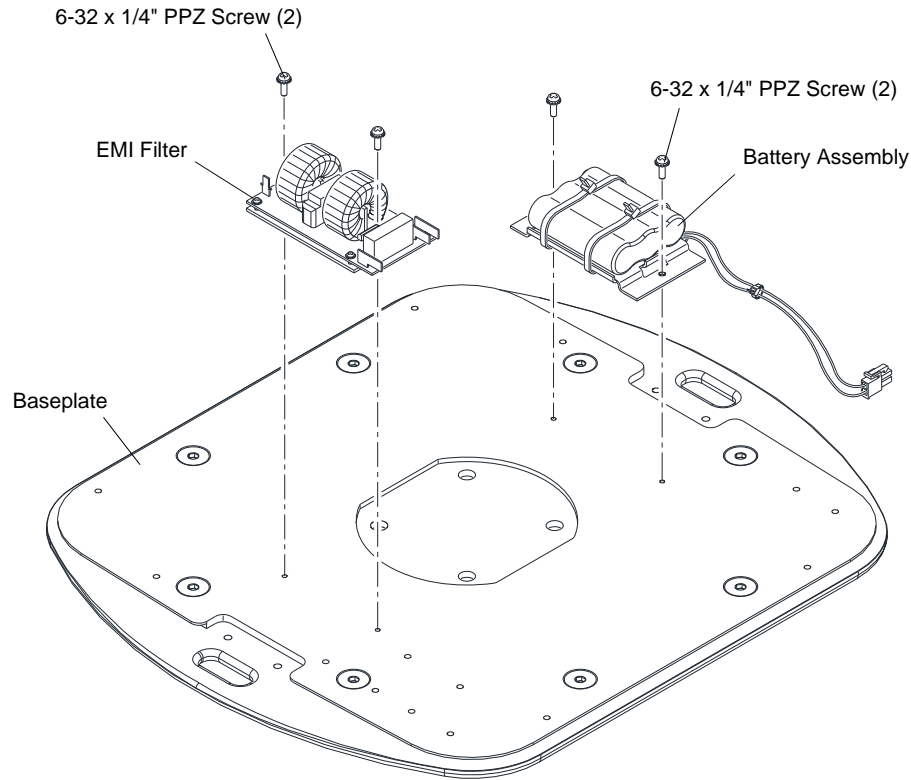


Figure 6: Disassembling Baseplate

- Step 8. Install Battery Assembly and EMI Filter on new Retrofit Baseplate (21.9812.0802). (Refer to **Figure 6**)
- Step 9. Reattach Baseplate to Pan Tube using **NEW** hardware included in kit. (Refer to **Figure 5**.) Torque 3/8-16 hardware to 30 ft-lbs.
- Step 10. Secure Coverstrap to Baseplate. (Refer to **Figure 5**.) Apply Loctite 242 to 8-32 x 3/4" screws.
- Step 11. Reinstall Interface/LVS Module. (Refer to **Figure 3**.)
- Step 12. Reinstall EMI Ballast. (Refer to **Figure 2**.)

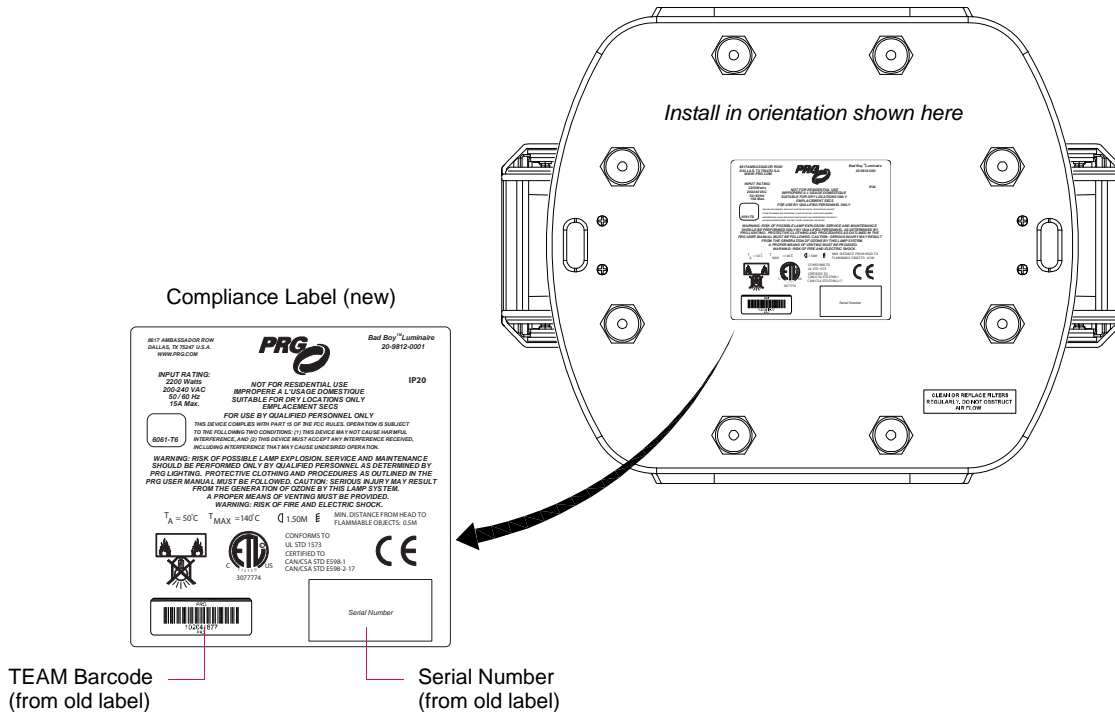
Step 13. Apply new Compliance Label (04.9812.0040) to Baseplate. Ensure label is oriented as shown in **Figure 7**.

Step 14. Transfer serial number and TEAM barcode labels from old Compliance Label to new Compliance Label.

---

**Note:** It is not necessary to reapply the Supplemental Safety Label.

---



**Figure 7: Applying New Compliance Label to Retrofit Baseplate**

Step 15. Power up and test as follows:

- Apply power to luminaire and allow it to calibrate.
- Verify no errors are present.
- Strike lamp and allow it to warm up to full power.
- Douse lamp.

Step 16. Complete TEAM inspection (UK only). For all other locations, email fixture serial numbers to [badboyservice@prg.com](mailto:badboyservice@prg.com)